

2022

The vascular plant diversity of Burundi

Ntore, Salvator

UB,

<https://repository.ub.edu.bi/handle/123456789/1166>

Téléchargé depuis le dépôt institutionnel officiel de l'Université du Burundi

The vascular plant diversity of Burundi

Salvator Ntore¹, Franck Theeten², Jacques Nkengurutse³, Joël Ndayishimiye³, Marc S. M. Sosef¹

- 1 Meise Botanic Garden, Meise, Belgium
- 2 Royal Museum for Central Africa, Tervuren, Belgium
- 3 University of Burundi, Bujumbura, Burundi

Corresponding author: Salvator Ntore (salvator.ntore@plantentuinmeise.be)

Academic editor: Elmar Robbrecht ♦ Received 7 April 2022 ♦ Accepted 1 July 2022 ♦ Published 16 November 2022

Abstract

Background and aims – The vascular plant diversity of Burundi is still insufficiently explored, described, and understood. The goal of this paper is to show the degree of botanical exploration and the spatial patterns of botanical diversity in Burundi to date.

Material and methods – The study is based on a dataset containing virtually all plant collections, observed in herbaria, recorded in databases, or cited in literature, made in Burundi. All data were compiled, cleaned, and each record georeferenced. Various distribution analyses were carried out, some of which were based on a grid of 199 hexagonal cells.

Key results – The dataset comprises 37,200 herbarium collections representing 3,860 species grouped in 1,290 genera and 216 families. The expected species richness is estimated at 4,869. The average number of collections per species is 8.8, but 1,149 species (27%) are sampled only once. The seven most species-rich families are Fabaceae (539 spp.), Poaceae (387), Asteraceae (298), Orchidaceae (286), Cyperaceae (272), Rubiaceae (227), and Acanthaceae (128), which together account for over 50% of the vascular plant flora of Burundi. The seven largest genera are *Cyperus* (90 spp.), *Crotalaria* (60), *Indigofera* (50), *Polystachya* (48), *Habenaria* (47), *Vernonia* (45), and *Eragrostis* (41). In terms of number of herbarium collections, the six most important families are Poaceae (4,754 collections), Fabaceae (4,300), Asteraceae (2,226), Rubiaceae (2,191), Cyperaceae (1,730), and Lamiaceae (1,275). The four areas most intensively explored and with the highest known species diversity are the Rusizi plain, the Kibira rain forest belonging to the Albertine Rift, the Bururi and Rumonge areas in the west, and the Mosso depression in the east.

Conclusion – With a collecting index of 133 collections per 100 km², the botanical exploration of Burundi can be considered as relatively good. However, 28% of the species are only represented by a single record and some 1,000 species are potentially present but have remained uncollected to date. For every 100 new collections, there are on average 6 new species records, indicating that Burundi's inventory is still not complete.

Keywords

Burundi, collections, data, distribution, inventory, sampling, species richness

INTRODUCTION

Comprehensive inventories that catalogue the occurrence of components of biodiversity in any given geographical region remain fundamental, indeed, essential research tools for conservation planners and other users of biodiversity information (Figueiredo et al. 2009). For many parts of the world, sound data on biodiversity and thorough knowledge of plant species richness and distribution are still lacking (Sosef et al. 2017). In Burundi, these basic but crucial data on plants are extremely

scattered, poorly documented, and often obsolete or even lacking (Reekmans and Troupin 1983).

Our knowledge of the botanical wealth of tropical regions is still largely based on information obtained from herbarium specimens (Sosef et al. 2021). These remain, without a doubt, the most reliable and hence preferable source of data (Farjon 2001). Fortunately, with the ongoing digitization of herbarium specimens (Nieva de la Hidalgo et al. 2020), a large amount of spatial and temporal data related to these specimens has become available, allowing analyses of species richness and distribution patterns (Sosef et al. 2017) that are precious and urgently needed

for global as well as regional conservation efforts (CBD 2011; Schmidt et al. 2017).

Burundi, one of the smallest countries in tropical Africa, is rather mountainous, has a surface area of 27,834 km², and is nestled between the highlands of East Africa and the eastern part of the Democratic Republic of the Congo at about 2°20'S to 4°30'S and 28°50'E to 30°53'E. Despite its modest surface area, the country encompasses an astonishing diversity of natural environments, with for example a wide elevational range of 780–2,670 m (Fig. 1), which partially determines the diversity of the vegetation and the vascular plant flora. Apart from the alpine regions, the country was originally more or less completely covered by forest, but currently, clearance for agriculture and other human purposes has reduced this to only 5% of its surface. The different vegetation types occurring in this country, which is a crossroad of Guinean, Zambebian, and Sudanese floristic influences, include dry forest, xerophilous gallery forest, forest-grassland mosaic, montane rainforest, mesophilous periguinean forest (i.e. peripheral evergreen Guineo-Congolian rain forest), miombo woodland, wooded grassland, savannas, and marshes (Lewalle 1972; Reekmans 1980a, 1980b; Ntore et al. 2018), with small areas of the ericaceous belt

vegetation that still occurs on the top of the Congo-Nile Divide (Hedberg 1951; Ntore et al. 2018).

Until the publication of this paper, it has been widely assumed that the country harbours a comparatively rich botanical diversity (Lewalle 1972; Reekmans 1980a, 1980b). However, this idea has largely been based on informal expert opinions or non-documented estimations (e.g. Bigendako 1997; Bizuru et al. 2003; Maréchal et al. 2014). Apart from the Flore d'Afrique centrale series as well as taxonomic monographs and revisions (e.g. Ndabaneze 1989; Pichi Sermolli 1983, 1985), only few botanical studies on very limited areas (Lewalle 1972; Reekmans 1980a, 1980b, 1981) are available, although a Red List of the endemic and range-restricted vascular plants was published recently (Ntore et al. 2018). To counter this situation, the first author undertook an effort to compile a (nearly) comprehensive herbarium specimen database, leading to the first ever Checklist of the Vascular Plants of Burundi, to be published soon. The present paper provides the results of several basic analyses and thus represents the first ever such study undertaken for the country as a whole. Together, the checklist and the present paper aim at offering a better understanding

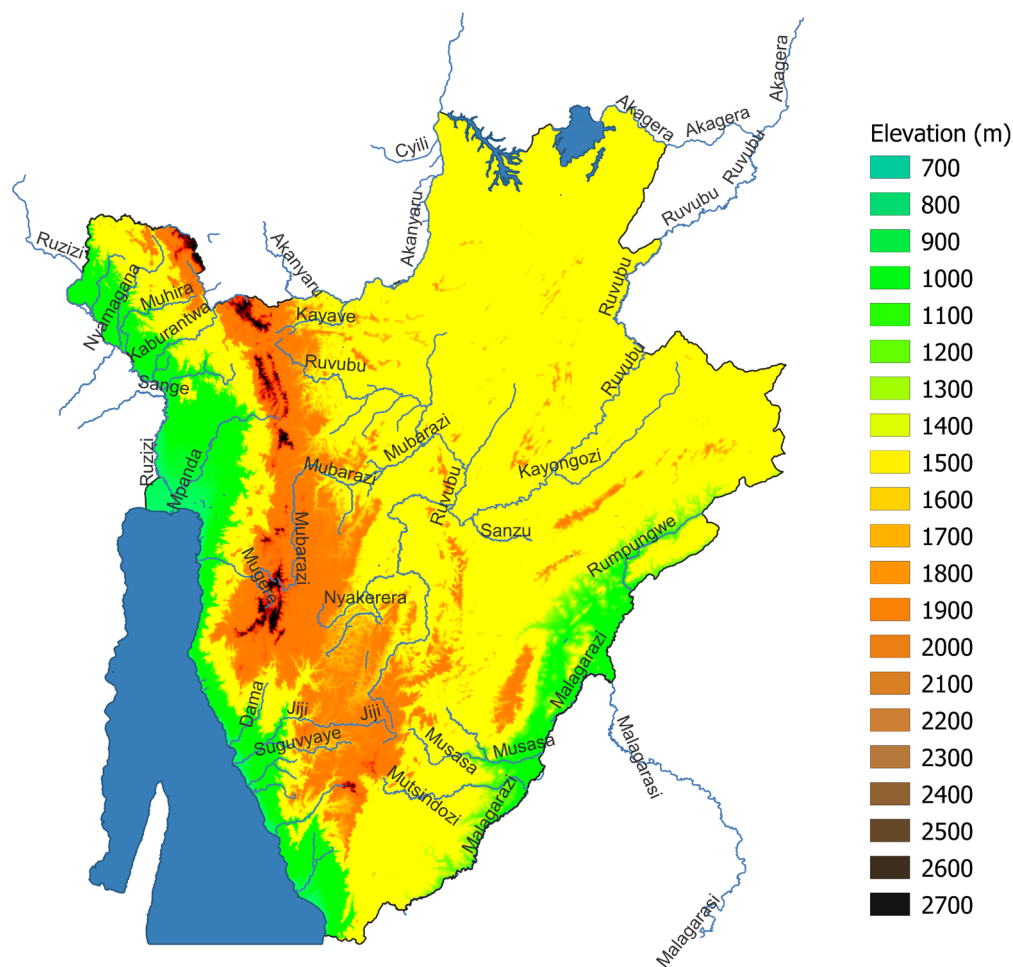


Figure 1. Physical map of Burundi.

of the species wealth and provide temporal and spatial patterns of plant diversity across Burundi.

Using the unique source of herbarium specimen data, we will provide answers to the following questions: (i) What is the overall degree of the botanical collecting effort? (ii) What is the spatial and temporal distribution of the collecting effort? (iii) How many plant species are known to occur in the country? (iv) How is plant species richness distributed across Burundi? and (v) Approximately how many plants species remain to be recorded for the country?

MATERIAL AND METHODS

Data compilation

Herbarium collections of vascular plants from Burundi kept at B, BIA, BM, BR, BRLU, EA, FI, G, GENT, GOET, K, JE, LG, MO, P, WAG, and YBI were surveyed (underlined herbaria were visited physically, others were consulted online or their data obtained from literature; herbarium codes follow Thiers continuously updated). Each collection, which may consist of a single specimen or has several duplicates in different herbaria, constitutes evidence of the presence of a taxon at a specific locality in Burundi, at a specific time. The majority of the records were extracted from the database at BR. Then, we performed a thorough literature review from which we obtained additional specimens, for instance Arbonnier and Geerinck (1993), Geerinck (1992), Geerinck and Arbonnier (1996), Pichi Sermolli (1983, 1985), and Schultze-Motel (1960). The data fields include barcode(s), herbarium code, species name, vernacular name, collector name, collection number, collecting date, elevation, locality description, and latitude/longitude.

Georeferencing

While most collections made during the last two decades have coordinates taken with Global Positioning Systems (GPS) equipment, many of the older ones often lack accurate latitude and longitude data. Most of the collecting localities have their geographic coordinates available from the gazetteer by Bamps (1982), but others needed to be added using other sources, mostly topographic maps and Google Earth. Coordinates assigned using Bamps (1982) or from label information were entered in a column as degrees minutes seconds (DMS), then converted to decimal degrees in another one.

$$DD = D + \frac{M}{60} + \frac{S}{3600}$$

For our general mapping and diversity estimations as a country-wide scale, we accepted accuracy values of less than 10 km. Localities that had an estimated accuracy of more than 10 km were not georeferenced. By applying a thorough manual check of the correctness of all geographic data, georeferencing errors were minimized.

Data analyses

For some of the calculations, a pattern of hexagonal grid cells was defined, each of 296 km² or 10 arcminutes in diameter; at the country border, these were clipped. In total, 199 such cells were defined. All analyses were performed at the species level, unless otherwise indicated. In all taxon diversity analyses, specimens doubtfully identified to species level (indicated by aff. or cf.), or related to hybrids or cultivated material were left out. When counting species, collections identified to genus level only were not taken into account unless the genus was not represented by any species. In such counts, specimens identified to family level only were not included.

Mapping and spatial analyses were carried out by using QGIS v.3.14 (QGIS Development Team 2020). To estimate the total number of species of vascular plants potentially present in the country, a Chao2 estimation was applied (Chao 1987).

RESULTS

Collections and collecting

Data compilation

The final dataset contains 37,200 unique herbarium collection records, each represented by one or more specimens. A total of 785 collections (ca 2%) could not be georeferenced due to their low precision in the locality information.

Collecting density index

The collecting density index (CDI) of a given region is defined as the number of samples obtained per 100 km² (Campbell and Hammond 1989). These authors consider a value of 100 as an acceptable minimum for a tropical region to be considered as 'fairly well known'. Currently, the CDI for Burundi is 133 and it can thus be stated that the flora of Burundi is reasonably well sampled. Although this value seems insignificant, in tropical countries it is only very rarely achieved. For instance, it drops down to only 1.6 for the neighbouring Democratic Republic of the Congo. However, in Burundi, the collecting efforts are not evenly distributed across the country and thus some regions still remain fairly poorly sampled.

History of collecting

At the end of the 19th century, many explorers travelled in Burundi (then called Urundi), searching for the famous sources of the Nile and the legendary 'Mountains of the Moon' (Lewalle 1967), and some of them collected plants. In the 1890s, the country became part of the German protectorate of East Africa (Deutsch-Ostafrika). In 1893, it was, however, the British Georges Francis Scott Elliot who conducted the first herbarium collections and deposited them at the herbaria of the British Museum

(BM) and the Royal Botanic Gardens, Kew (K). German botanists, notably A. Keil, Hans Meyer, and Gustav Albert Peter, collected plants later, i.e. between 1910 and 1920, around Bujumbura (then called Usumbura) and in eastern Burundi. Most of their collections stored at the herbarium of the Botanic Garden and Botanical Museum Berlin-Dahlem (B) were destroyed in the 1943 bombing of Berlin. However, a few of them survived (Sleumer 1949: 173), and 60 of them are digitally accessible on <https://www.herbonauten.de>, nine of which are also available on <https://plants.jstor.org>. In 1919, the country was placed under Belgian mandate, and Belgian botanists took over the collecting work, continuing this activity after the independence of Burundi in 1962 (Table 1). After that year, the collections recorded in Burundi were made under the auspices of the Official University of Burundi created in 1964, which later became the University of Burundi in 1977. The Herbarium of Burundi (BJA) was created in 1966. The most intense botanical exploration took place between 1965 and 1981 under the leadership of José Lewalle and Marcel Reekmans. Together with other visiting Belgium botanists, such as Jules Bouharmont, Jacques Lambinon, Johannes Rammeloo, and Paul Van der Veken, and Burundian botanists such as Marie-José Bigendako and Pontien Ndabaneze, they realized over 22,000 collections, i.e. 59% of all collections registered today. Although their first set of specimens often went to BR, GENT, or LG, a duplicate was generally deposited at BJA and EA. However, the highest annual record, which amounts to 2,930 botanical specimens, was made shortly before, in 1952, by Georges Michel and J. Reed in south-eastern Burundi (Fig. 2). The largest set was made by Marcel Reekmans, who collected 10,521 herbarium specimens between 1971 and 1981 followed by the

set made by José Lewalle (1931–2004), who collected over 6,500 numbers between 1965 and 1972 (Table 1; Reekmans and Troupin 1983). The year 1979 marked a turning point for the botanical exploration of the country. Indeed, Burundian researchers, mainly those preparing their doctoral theses, began to take over this task and achieved an additional ca 7,300 collections (Fig. 2). From 1965 to the present, the annual average sampling rate is 290 collections. Five hundred records do not bear a collecting year.

Geographical distribution of collections

Figure 3 shows a map on which each point represents the locality where one or more herbarium collections have been made. Although this shows that much of the country has been visited at least once by a botanist, Fig. 4 shows that the intensity of these visits varies greatly. It provides the collecting density across the country, recorded per hexagonal grid cell. The most densely sampled cells (more than 1,000 collections) are found in (i) the west of the country (lower Rusizi where three cells include respectively 2,618, 2,194, and 1,758 collections), (ii) on the Congo-Nile ridge (with a cell including 2,557 collections), (iii) in the east, in the Mosso region (Kinyinya and Gihofi, with cells including respectively 1,609 and 1,595 collections), and (iv) in the south-west (Rumonge, with a cell including 1,475 collections, and the valley of Siguvyaye with 883 collections). Contrastingly, the lowest sampling densities are found in the central part and some smaller peripheral areas of the country. It is worth noting that the central region corresponds to the highest population density, where virtually all natural vegetation has been eliminated and replaced by agricultural fields, plantations, and habitations (Ntore et al. 2018).

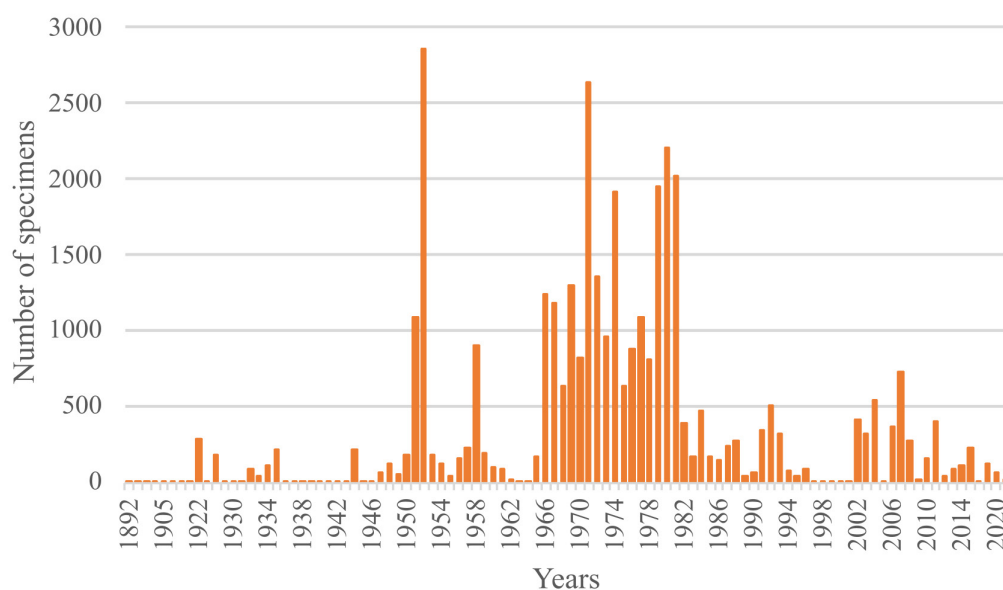


Figure 2. Graphical representation of the number of specimens collected over time.

Diversity analyses

Species richness

The species richness is a simple count of the number of species known from a specific region. Burundi material not identified to the species level (a total of 1,174 collections) was left out of this calculation, except when the specimen consisted of an unidentified species of a genus for which no other species were recorded. In total, 76 botanical specimens are not identified at all, 371 are only identified to the family level, while 718 are identified only to the genus level. More than 15% of these specimens are kept in BJA and YBI, which together house 2,692 collections that have no duplicates elsewhere.

Currently, the species richness of the vascular flora of Burundi is 3,860. However, given the comparatively large number of collections that remain unidentified at the species level, the sampled richness is presumably slightly higher.

Table 2 shows species richness estimations provided by previous authors. The 3,860 species recorded by the present study are grouped in 1,290 genera and 216 families. In Burundi, the seven most species-rich families are Fabaceae (539 spp.), Poaceae (387), Asteraceae (298), Orchidaceae (286), Cyperaceae (272), Rubiaceae (227), and Acanthaceae (128), which together account for ca 50% of the vascular plant flora. The seven most species-rich genera are *Cyperus* s.l. (90 spp.), *Crotalaria* (60), *Indigofera* (50), *Polystachya* (48), *Habenaria* (47), *Vernonia* s.l. (45), and *Eragrostis* (41).

Species accumulation curve

The number of species recorded for Burundi, accumulated over time, is shown in Fig. 5. This figure includes segments with a steep slope, corresponding to the peak collecting periods of 1950–1952 and 1965–1981. Apart from the high collecting efforts realized in these periods, it also indicates that these collectors went to previously unexplored regions. For example, in Kinyinya and Gihofi

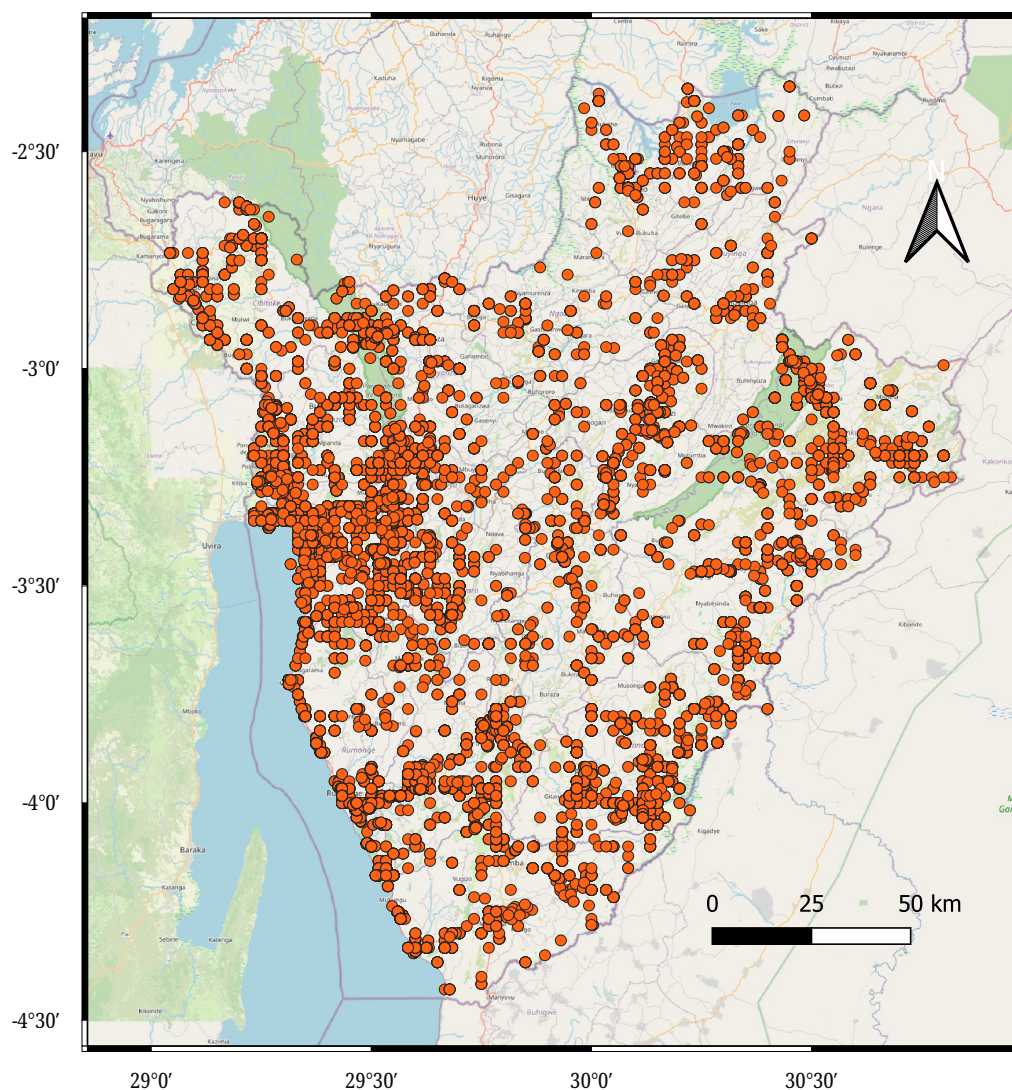


Figure 3. Geographic distribution of collecting localities.

Table 1. Overview of the most prolific collectors (> 100 collections) of vascular plants in Burundi.

Collector name family name, first name(s)	Date of birth	Date of death	Profession	Collecting dates	Number of collections	Deposited
Arbonnier, Michel	1948-06-29		Forest engineer and botanist	1979–1984; 1990–1994	331	BR, MPU
Auquier, Paul Henri	1939-08-15	1980-08-29	Botanist	1971–1972; 1974	350	BJA, BR
Bangirinama, Frédéric (et al.)	1970-12-22		Botanist	2007	357	BRLU
Baudet, Jean-Claude	1944-05-31	2021-07-18	Botanist and philosopher	1968–1973	214	BR
Becquet, August Jean Marie	1899-06-04	1974-05-29	Agricultural engineer	1932–1934	260	BR
Bigendako, Marie-José	1948		Botanist	1978–1986	420	BJA, BRLU
Bizuru, Elias	1969-12-27		Botanist	2002–2003	590	BRLU
Bouharmont, M.G. Jules	1929-07-19		Agricultural engineer and botanist	1978	556	BR
Breyne, Herman	1942-06-20		Agricultural engineer and botanist	1992	215	BR
Caljon, G.I. Adolf	1949-07-27	1990-09-17	Botanist	1979–1990	1049	BJA, BR, GENT, WAG
Christiaensen, Antoine Richard		1966	Botanist and mammologist	1958	103	BR, LWI
De Laet, Jan	1964-01-16		Botanist	1991	105	BR, BJA
Elskens, Octave Adrien-Jean	1879-04-11	1935-02-24	Graduate of the colonial culture course	1922	291	BR
Germain, Ghislain René Antoine	1914-03-10	1982-02-05	Engineer in water and forests	1950	160	BR
Hendrickx, Frédéric Léon	1911-02-13	1980-06-20	Agricultural engineer	1940–1961	148	BR
Lambinon, Jacques Ernest Joseph	1936-09-28	2015-11-14	Botanist	1974–1975	264	BR
Lejeune, Jean-Baptiste Henri	1900		Agricultural engineer	1933–1934	274	BR
Lewalle, José	1931-06-06	2004-04-05	Botanist	1965–1971	6,339	BJA, BR, EA, G, K, LISC, MO
Liben, Louis	1926-10-12	2006-05-28	Agricultural engineer and botanist	1953–1954	112	BR
Masharabu, Tatién	1974-10-30		Botanist	2006–2007	652	BRLU
Michel, Georges (with Reed, J.)	1930	1958	Agricultural engineer	1951–1958	4,593	BR, IUK, K, MO, YBI
Ndabaneze, Pontien	1952		Botanist	1979–1985	1,752	BJA, LG, GENT
Ndayishimiye, Joël (et al.)	1971-08-17		Botanist	2003–2014	280	BRLU
Nijimbere, Etienne	1971-11		Botanist	2002–2003	100	BJA

Table 1. (continued) Overview of the most prolific collectors (> 100 collections) of vascular plants in Burundi.

Collector name family name, first name(s)	Date of birth	Date of death	Profession	Collecting dates	Number of collections	Deposited
Niyongabo, Ferdinand	1972-06-21		Botanist	2004–2008	211	BR
Niyongere, Léopold	1946	2005-05-10	Parataxonomist	1968–1984	172	BJA, BR, GENT
Nkengurutse, Jacques (et al.)	1977-08-20		Botanist	2019–2021	419	BJA, BR
Ntore, Salvator	1958-01-04		Botanist	2002, 2010, 2014	298	BJA, BR
Pichi-Sermolli, Rodolfo Emilio Giuseppe	1912-02-24	2005-10-06	Botanist	1966	127	BR, FI
Rammeloo, Johannes	1946-12-18		Botanist	1974	245	BR, GENT
Reekmans, Marcel	1934		Botanist	1971–1981	10,521	BJA, BR, EA, GENT, K, LG, MO, P, WAG
Robyns, Frans Hubert Edouard Arthur Walter	1901-05-25	1986-12-17	Botanist	1926	152	BR
Saintenoy-Simon, Jacqueline	1937-02-03		Botanist	1988	163	BR
Staner, Pierre Joseph	1901-05-28	1984-09-24	Botanist	1948	118	BR
Symoens, Jean-Jacques André	1927-03-21	2014-12-03	Chemist and botanist	1952–1969	162	BR, GENT
Valière, Jean	1948-07-18	2012-04-18	Agricultural engineer	1971–1986	155	BR
Van der Ben, Dick	1927-07-20	2019-05-16	Agricultural engineer	1953–1959	932	BR, K, WAG
Van der Veken, Paul	1928-08-15	2012-05-07	Botanist	1974, 1982, 1984	414	BR, GENT
Vrydagh, Jean-Marie Martin Félix	1905-05-04	1962-05-30	Agricultural engineer	1944	243	BR

as well as in the Rusizi plain, José Lewalle and Marcel Reekmans carried out systematic and intense surveys from 1966 onwards. Moreover, some collectors had a special focus, e.g. Michel Arbonnier for Orchidaceae, Pontien Ndabaneze for Poaceae, Sue C. Antun-Gupfert and Rodolfo E.G. Pichi Sermolli for pteridophytes. The figure also shows some segments that are almost horizontal, indicating that either the number of collections added was low (orange line) and/or that new collections were made in already well sampled regions (blue line). We

observe that during the last 10 years the slope of the blue line is still rising, with on average 6 species per 100 new collections, showing that the inventory of Burundi's vascular plants is far from complete.

Most of the species are represented by very few collections (Fig. 6); on average, each species is represented by 8.8 collections. Surprisingly, a total of 1,370 species (28%) were collected only once, 600 species (13%) were collected twice, 410 species (9%) three times, and 220 species (6%) four times. A total of 3,145 species (75%) are

Table 2. Overview of previously recorded species richness for the country.

	Angiosperms	Gymnosperms	Pteridophytes	Total
Bigendako (1997)	2,733	2	274	3,009
Bizuru et al. (2003)	-	-	-	3,554
Maréchal et al. (2014)	3,413	-	174	3,587
This study	3,642	4	214	3,860

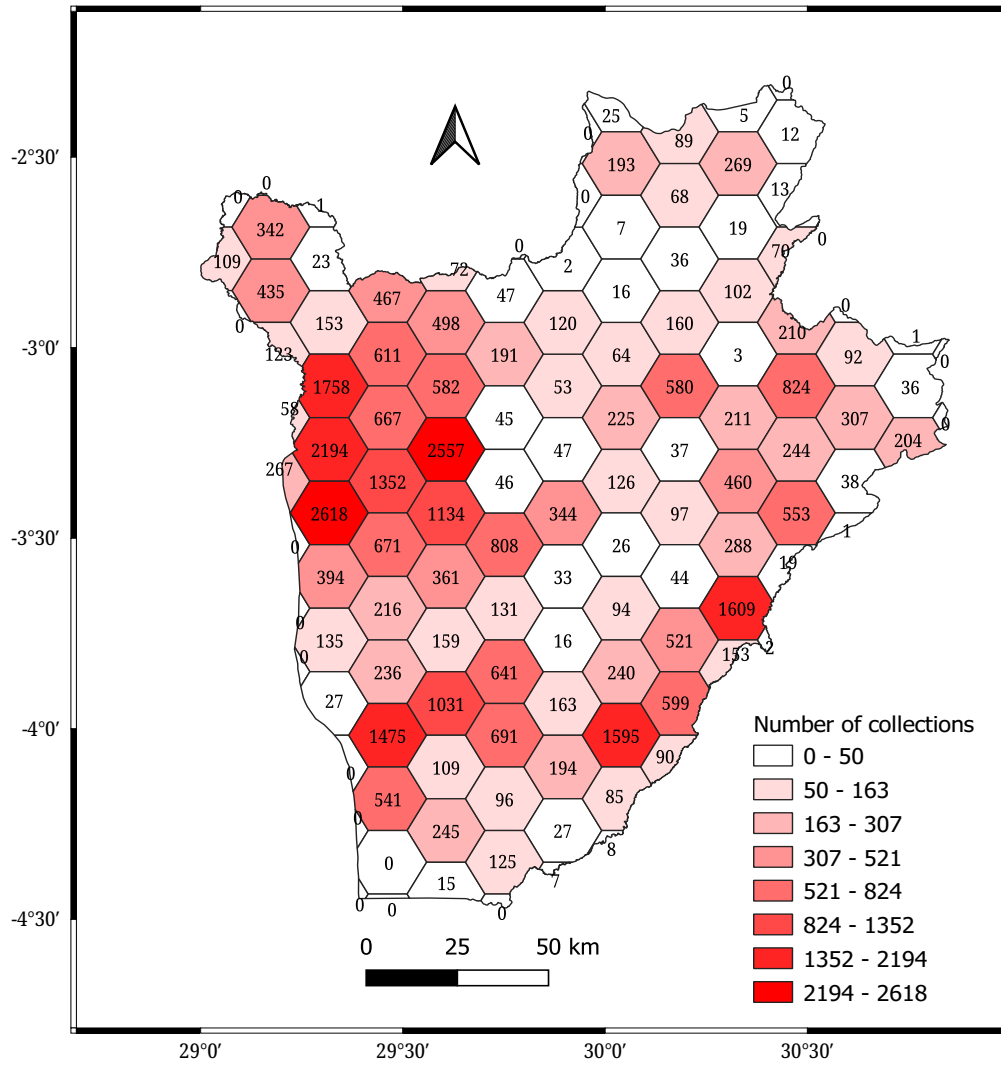


Figure 4. Collecting density across Burundi, with the number of collections shown in each grid cell.

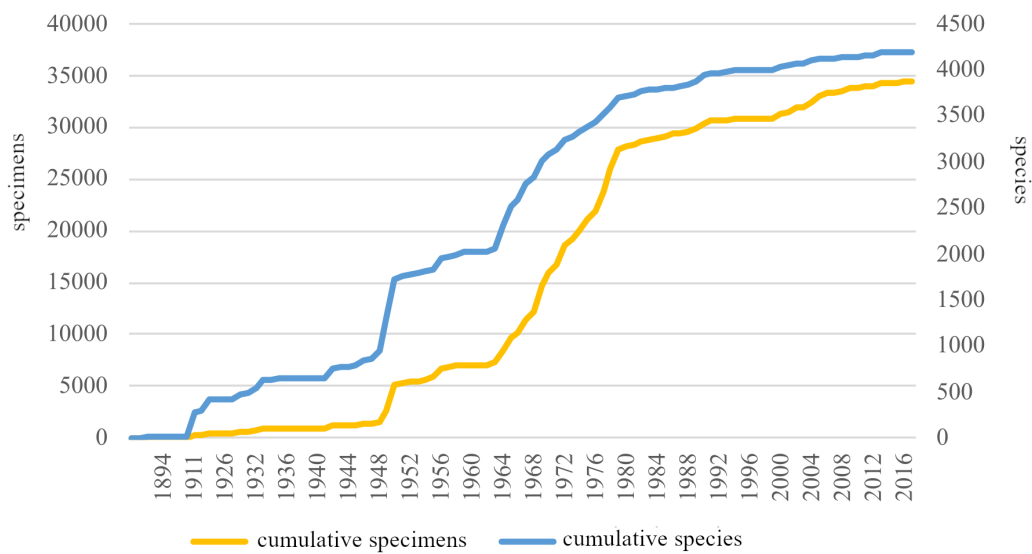


Figure 5. Cumulative number of specimens and cumulative number of species over time.

known from 10 or fewer specimens, while only 38 species are represented by more than 50 specimens each. The five most frequently collected species are one Rubiaceae species and four grasses, respectively *Virectaria major* (K.Schum.) Verdc. (95 specimens), *Loudetia simplex* (Nees) C.E.Hubb. (84 specimens), *Hyparrhenia diplandra* (Hack.) Stapf (79 specimens), *Andropogon schirensis* Hochst. ex A.Rich. (75 specimens), and *Hyparrhenia filipendula* (Hochst.) Stapf (73 specimens).

Spatial analysis of collection-based species richness

In order to identify spatial patterns of species richness, the number of species collected within each hexagonal cell was mapped (Fig. 7). Eleven cells contain more than 500 different species. As expected, the most species-rich cells are located in the most densely sampled zones (Fig. 4), i.e. in the west of the country, the Rusizi plain with three cells including respectively 1,018, 832, and 766 species, the Congo-Nile ridge containing 920 species and Rumonge and Bururi (respectively 682 and 577 species), and in the east of the country, Gihofi and Kinyinya, encompassing respectively 802 and 763 species. The most species-poor cells are those that have a smaller surface located at the border, and in the centre and the north-east, and the far south of the country.

By randomly sampling from the collection dataset (without putting them back in) and plotting the increase in number of species, we can obtain a rarefaction curve (Gotelli and Colwell 2001). Figure 8 shows this curve for Burundi. The curve is still increasing substantially at the top right side, indicating, similar to Fig. 5 above, that the inventory of Burundi is far from complete.

Assessment of the inventory completeness

The inventory completeness of a geographic sampling unit is the ratio between the observed richness and the expected richness of the unit (multiplied by 100 to obtain a percentage). It can be inferred from available data by several estimators. For our type of data, we need to use a non-parametric estimator, and Chao2 (Gotelli and Chao 2013) has been shown to be a suitable one (see for example Sosef et al. 2017). It predicts the number of unobserved species (that occur in the country but have zero collections) from those found only once or twice in a sampling set. The assumption is that the number of species detected with a low number of records decreases with increasing sampling effort. The formula used is

$$S_{\text{Chao2}} = S_{\text{obs}} + \frac{q_1^2}{2q_2}$$

where S_{Chao2} is the estimated total number of species, S_{obs} is the number of species observed, q_1 is the number of singletons (i.e. the number of species known from a single collection), and q_2 is the number of doubletons (the number of species known from two collections). For our dataset, the estimated total species richness is:

$$S_{\text{Chao2}} = 3,860 + \frac{1,159^2}{2 \times 665} = 4,869$$

In conclusion, the inventory completeness of Burundi is 79%.

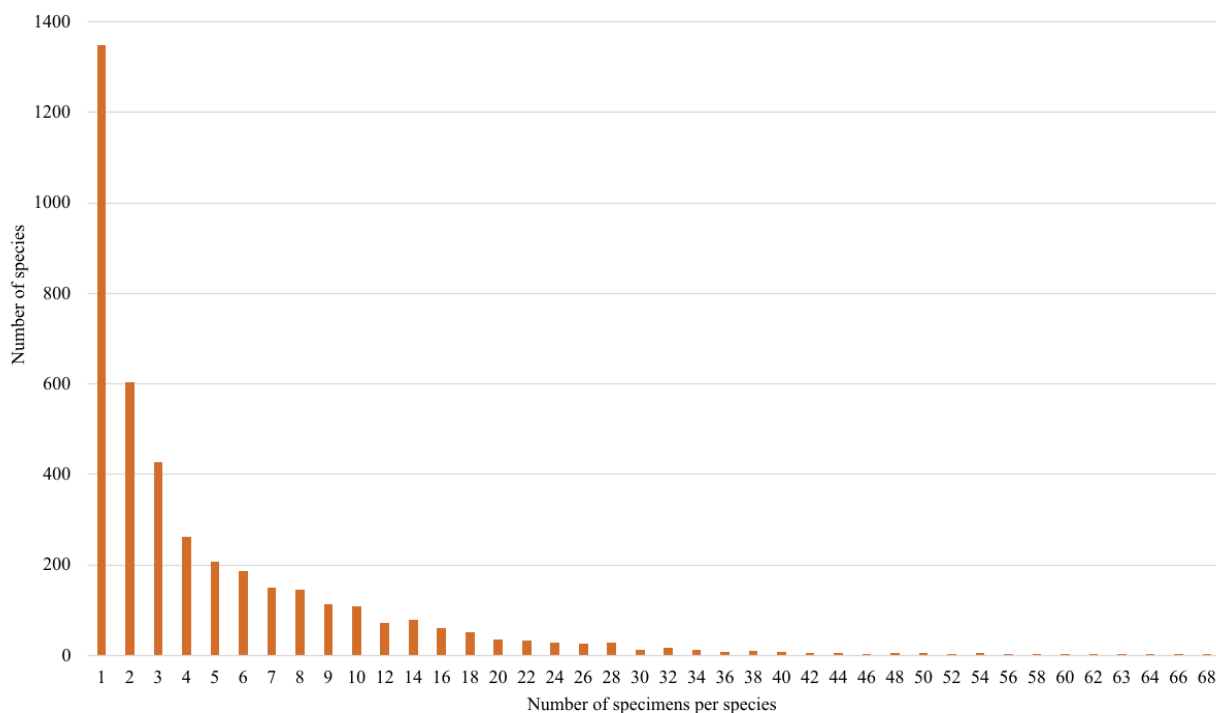


Figure 6. Ranking of species by number of specimens (frequency).

DISCUSSION

Herbarium specimens and their related information constitute a precious and reliable source of baseline data for estimating the botanical richness of a country. Mapping their collecting locality patterns may also provide a broader floristic understanding of a region and could show a species range decline, range extension, or disturbance history. They facilitate planning for further explorations, as they highlight areas that are under-collected. They also provide crucial input to IUCN Red List assessments and as such they are crucial to the conservation of botanical diversity. Their management goes hand in hand with training of botanists and the proper scientific curation of these natural history collections.

Apart from a general lack of herbarium collections, notably from several poorly known regions but also from more recent times, the greatest limitation met in the present research is the large number of undetermined specimens or/and those with incomplete label data. We do not think, however, that these limitations had any

major impact on the conclusions. The results do confirm the general opinion that the country is botanically rich. Furthermore, they highlight that potentially a large number of species, more than 1,000, is yet to be discovered within the country.

Broader floristic knowledge

With 133 specimens collected per 100 km², Burundi can be considered as botanically fairly well known. However, this does not mean that there is no more need for botanical exploration. In fact, most of the species are known from only a few records (see Fig. 6), many even from only a single one. Indeed, continuing plant collecting activities is still highly needed for the consolidation of the floristic knowledge of the country. Such activities are required to complete the documentation of (i) the morphological variability within and distinction between species; (ii) the species distributional data; (iii) the changes in the range size of species through time; (iv) the changes in species diversity through time; (v) the tracking of ongoing

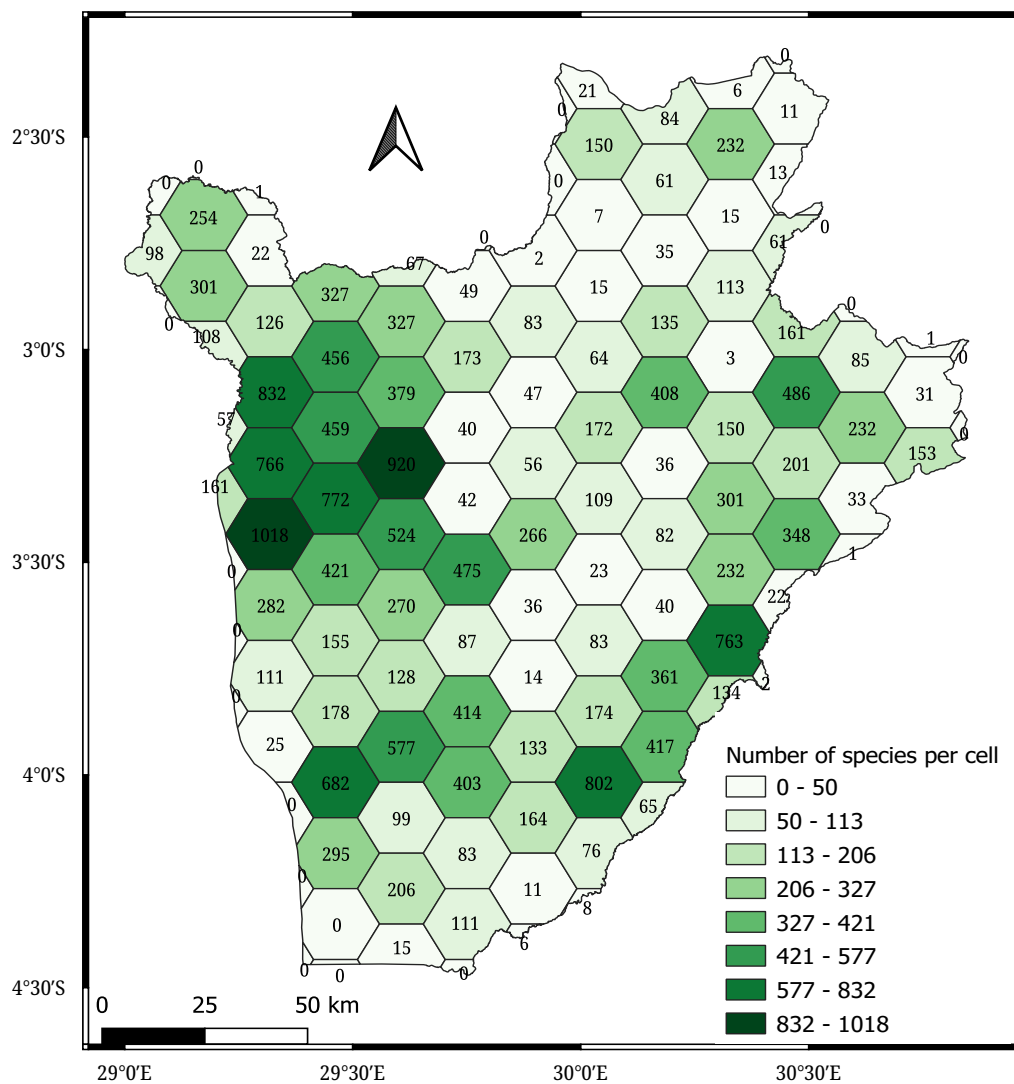


Figure 7. Geographical distribution of collection-based specific richness in each grid cell.

invasive alien weed range expansion; (vi) the collecting of species still unknown in Burundi. The latter activity also includes the discovery of species new to science; between 2010 and 2021, 13 species were newly described from Burundi material (Fischer et al. 2021; IPNI 2021).

Range changes and disturbance history

Herbarium specimens provide data related to the botanical disturbance history of an area. Some of the specimens originate from areas where species have disappeared, while others are recorded from areas where they were previously unknown.

Data deduced from historical herbarium specimens originating from areas where the species in question has disappeared no longer reflect the reality of current plant distribution and richness in this heavily populated country. Nevertheless, such data remain useful for the understanding the historical spatial distribution of species (Sharrock et al. 2018).

Some species are found in areas where they were previously unknown and have presumably been recently introduced. That is particularly the case for a number of invasive weeds that are dramatically and continuously proliferating over the past 20 years in the country, especially around Bujumbura. Most of these are still under-sampled, e.g. *Brugmansia suaveolens* (Humb. & Bonpl. ex Willd.) Sweet, *Cecropia pachystachya* Trécul, *Desmodium intortum* (Mill.) Urb., *Eichhornia crassipes* (Mart.) Solms, *Galinsoga parviflora* Cav., *Hydrocotyle ranunculoides* L.f., *Mesosphaerum suaveolens* (L.) Kuntze, *Lantana camara* L., *Mimosa diplotricha* C.Wright, *M. pigra* L., *M. pudica* L., *Oxalis corniculata* L., *Richardia brasiliensis* Gomes, *Salvinia molesta* D.S.Mitch., *Senna obtusifolia* (L.) H.S.Irwin & Barneby, *Solanum*

mauritanum Scop., *S. torvum* Sw., *Tribulus terrestris* L., and *Xanthium strumarium* L.

Perspectives and recommendations for further research

The herbarium dataset used for this study is expected to provide a solid baseline for the future exploration and study of the flora of Burundi, including its conservation planning (Sharrock et al. 2018). It will be transformed and enriched, and published as the Checklist of the Vascular Plants of Burundi (Ntore et al. in prep.).

Since plant collections often have several duplicates distributed to different herbaria, where they may benefit from new identifications or other name changes, a data source where such changes would be linked would be of great value. In the near future, the authors will act to create an e-Flora platform for Burundi, which will provide such a facility and which will then serve as a dynamic Checklist and data source for the vascular plants of Burundi.

Unfortunately, as the country is heavily and increasingly populated, the creation of new protected areas is subject to conflicting interests. Thus, the only possible alternative solution might be ex situ conservation (e.g. in gene banks or botanic gardens) of range-restricted and rare species that are known from degraded habitats and are close to extinction.

ACKNOWLEDGEMENTS

We are grateful to the curators of BRLU, GENT, LG, and YBI who assisted in accessing their collections. We are also greatly indebted to Cyrille Chatelain, Christine Coquyt, Henry Engledow, Laurent Gohy, Régine Fabri, Tatien Masharabu, Attila Mesterházy, Marc Reynders,

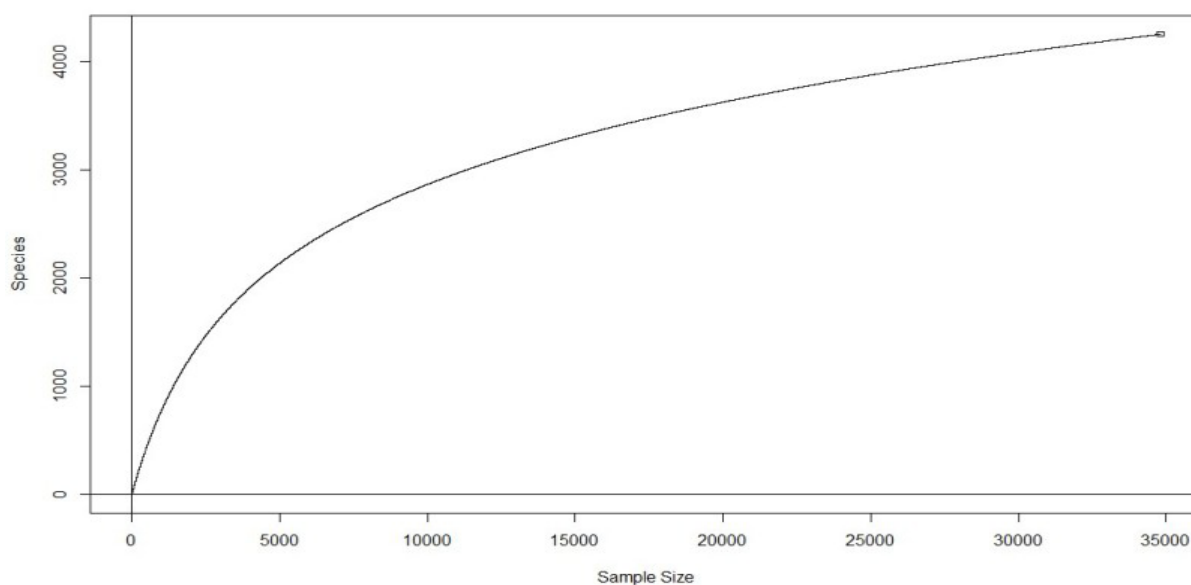


Figure 8. Rarefaction curve of species richness for Burundi.

Wesley Tack, and Jan Wieringa for their kind help in the realization of this work. We also warmly thank the editor and the reviewers for their careful reading and their excellent remarks.

REFERENCES

- Arbonnier M, Geerinck D (1993) Contribution à l'étude des Orchidaceae du Burundi (première partie). *Belgian Journal of Botany* 126: 253–261. <https://www.jstor.org/stable/20794376>
- Bamps P (1982) Flore d'Afrique centrale (Zaire, Rwanda, Burundi): Répertoire des Lieux de Récolte. Jardin botanique national de Belgique, Meise, 1–224.
- Bigendako MJ (1997) Biodiversité, Patrimoine Culturel et Historique, Tourisme. SNEB, FAO, Bujumbura, 1–167.
- Bizuru E, Habonimana B, Ntakimazi G (2003) Identification des Besoins de Renforcement des Capacités en Matière de Taxonomie. Institut National pour l'Environnement et la Conservation de la Nature (INECN), Bujumbura, 1–57.
- Campbell DG, Hammond HD (1989) Floristic Inventory of Tropical Countries: The Status of Plant Systematics, Collections, and Vegetation, plus Recommendations for the Future. New York Botanical Garden, New York, 1–545.
- CBD (2011) Convention on Biological Diversity. Global Strategy for Plant Conservation. <https://www.cbd.int/gspc/> [accessed 24.03.2022]
- Chao A (1987) Estimating the population size for capture-recapture data with unequal catchability. *Biometrics* 43: 783–791. <https://doi.org/10.2307/2531532>
- Farjon A (2001) A World Checklist and Bibliography of Conifers (2nd edition). Kew Publishing, Richmond, 1–316.
- Figueiredo E, Smith GF, César J (2009) The flora of Angola: first record of diversity and endemism. *Taxon* 58(1): 233–236. <https://doi.org/10.1002/tax.581022>
- Fischer E, Abrahamczyk S, Holstein N, Janssens SB (2021) Evolution of *Impatiens* (Balsaminaceae) in the Albertine Rift – The endemic *Impatiens purpureoviolacea* complex consists of ten species. *Taxon* 70(6): 1–27. <https://doi.org/10.1002/tax.12566>
- Geerinck D (1992) Orchidaceae (seconde partie). In: Bamps P (Ed.) Flore d'Afrique centrale (Zaire – Rwanda – Burundi), Spermatophytes. Jardin botanique national de Belgique, Meise, 297–780. <https://doi.org/10.5281/zenodo.4660246>
- Geerinck D, Arbonnier M (1996) Contribution à l'étude des Orchidaceae du Burundi (deuxième partie). *Belgian Journal of Botany* 129(1): 66–70. <https://www.jstor.org/stable/20794312>
- Gotelli NJ, Colwell RK (2001) Quantifying biodiversity: procedures and pitfalls in the measurement and comparison of species richness. *Ecology Letters* 4: 379–391. <https://doi.org/10.1046/j.1461-0248.2001.00230.x>
- Gotelli NJ, Chao A (2013) Measuring and estimating species richness, species diversity, and biotic similarity from sampling data. In: Levin SA (Ed.) *The Encyclopedia of Biodiversity*. 2nd Edition. Elsevier, New York, 195–211. <https://doi.org/10.1016/B978-0-12-384719-5.00424-X>
- Hedberg O (1951) Vegetation belts of the East African mountains: results of the Swedish East Africa Expedition 1948, Botany, No 1. *Svensk Botanisk Tidskrift* 45: 140–202.
- IPNI (2021) International Plant Names Index. <https://www.ipni.org> [accessed 01.10.2021]
- Lewalle J (1967) Historique des explorations botaniques au Burundi. *Revue de l'Université Officielle de Bujumbura* 3: 161–165.
- Lewalle J (1972) Les étages de végétation du Burundi occidental. *Bulletin du Jardin botanique national de Belgique / Bulletin van de Nationale Plantentuin van België* 42(1/2): 1–247. <https://doi.org/10.2307/3667406>
- Maréchal C, Cawoy V, Cocquyt C, Dauby G, Dessein S, Douglas-Hamilton I, Dupain J, Fischer E, Fouth Obang D, Groom Q, Henschel P, Jeffery KJ, Korte L, Lewis SL, Luhunu S, Maisels F, Melletti M, Ngoufo R, Ntore S, Palla F, Scholte P, Sonké B, Stevart T, Stoffelen P, Van den Broeck D, Walters G, Williamson EA (2014) Conservation et gestion de la biodiversité. In: De Wasseige C, Flynn J, Louppe D, Hiol Hiol F, Mayaux Ph (Eds) *Les Forêts du Bassin du Congo – État des Forêts* 2013. Weyrich, Neufchâteau, 67–96.
- Ndabaneze P (1989) Catalogue des Graminées du Burundi. *Lejeunia* 132: 1–127.
- Nieva de la Hidalga A, Rosin PL, Sun X, Bogaerts A, De Meeter N, De Smedt S, Strack van Schijndel M, Van Wambeke P, Groom Q (2020) Designing an herbarium digitisation workflow with built-in image quality management. *Biodiversity Data Journal* 8: e47051. <http://doi.org/10.3897/BDJ.8.e47051>
- Ntore S, Fischer E, Sosef SM (2018) Red List of the endemic and range-restricted vascular plants of Burundi. *Scripta Botanica Belgica* 58: 1–215.
- Pichi Sermolli REG (1983) A contribution to the knowledge of the Pteridophyta of Rwanda, Burundi, and Kivu (Zaire). I. *Bulletin du Jardin botanique National de Belgique / Bulletin van de Nationale Plantentuin van België* 53(1/2): 177–284. <https://doi.org/10.2307/3668036>
- Pichi Sermolli REG (1985) A contribution to the knowledge of the Pteridophyta of Rwanda, Burundi, and Kivu (Zaire). II. *Bulletin du Jardin botanique national de Belgique / Bulletin van de Nationale Plantentuin van België* 55(1/2): 123–206. <https://doi.org/10.2307/3668036>
- QGIS Development Team (2020) QGIS Geographic Information System. Version 3.14. Open Source Geospatial Foundation. <https://qgis.org> [accessed 01.01.2021]
- Reekmans M (1980a) La flore vasculaire de l'Imbo (Burundi) et sa phénologie. *Lejeunia* 100: 1–52.
- Reekmans M (1980b) La végétation de la plaine de la basse Rusizi (Burundi). *Bulletin du Jardin botanique national de Belgique / Bulletin van de Nationale Plantentuin van België* 50(3/4): 401–444. <https://doi.org/10.2307/3668047>
- Reekmans M (1981) Les forêts à *Julbernardia globiflora* de l'est du Burundi. *Bulletin de la Société royale de botanique de Belgique* 114: 49–60. <https://www.jstor.org/stable/20793857>
- Reekmans M, Troupin G (1983) Etat actuel des recherches sur la flore et la végétation du Rwanda et du Burundi. *Bothalia* 14(3–4): 773–777.

- Schmidt M, Zizka A, Traoré S, Ataholo M, Chatelain C, Daget P, Dressler S, Hahn K, Kirchmair I, Krohmer J, Mbayngone E, Müller JV, Nacoulma B, Ouédraogo O, Sambaré O, Schumann K, Wieringa J, Zizka G, Thiombiano A (2017) Diversity, distribution and preliminary conservation status of the flora of Burkina Faso. *Phytotaxa* 304(1): 1–215. <http://doi.org/10.11646/phytotaxa.304.1.1>
- Schultze-Motel W (1960) Afrikanische Cyperaceae aus den Sammlungen von A. Peter. *Willdenowia* 2: 495–518.
- Sharrock S, Hoft R, de Souza Dias BF (2018) An overview of recent progress in the implementation of the Global Strategy for Plant Conservation – a global perspective. *Rodriguésia* 69(4): 1489–1511. <https://doi.org/10.1590/2175-7860201869401>
- Sleumer H (1949) The Botanical Gardens and Museum at Berlin-Dalhem. *Kew Bulletin* 1949: 172–175. <https://doi.org/10.2307/4113675>
- Sosef MSM, Dauby G, Blach-Overgaard A, van der Burgt X, Catarino L, Damen T, Deblauwe V, Dessein S, Dransfield J, Droissart V, Duarte MC, Engledow H, Fadeur G, Figueira R, Gereau RE, Hardy OJ, Harris DJ, de Heij J, Janssens S, Klomberg Y, Ley AC, Mackinder BA, Meerts P, van de Poel JL, Sonké B, Stévant T, Stoffelen P, Svenning J-C, Sepulchre P, Zaiss R, Wieringa JJ, Couvreur TLP (2017) Exploring the floristic diversity of tropical Africa. *BMC Biology* 15: 1–15. <https://doi.org/10.1186/s12915-017-0356-8>
- Sosef MSM, Gereau RE, Luke WRQ, Ntore S, Simo-Droissart M, Stévant T, Tack W (2021) Red List of the Endemic and Subendemic Trees of Central Africa (Democratic Republic of the Congo – Rwanda – Burundi). Meise Botanic Garden, Meise, 1–334. <https://doi.org/10.5281/zenodo.5645166>
- Thiers B (continuously updated) Index Herbariorum: a global directory of public herbaria and associated staff. New York Botanical Garden's Virtual Herbarium. <http://sweetgum.nybg.org/ih/> [accessed 24.03.2022]